

### CHARGE AND FILL UP FASTLY

The BT1000 hopper with hatch has been specially designed for loading all kinds of materials (gravel, sand, wood chips, etc.). In addition to tipping, a hatch in the bottom allows the operator to pour the contents of the hopper into a trailer, hopper, or big bags. The hopper is available in different volumes, from 750 to 2000 liters.



*Ideal for filling big bags*



#### BOLTS-ON BRACKETS

The container can be adapted to any type of loader thanks to bolt-on brackets. All attachments are custom-made in our own workshops.



#### HYDRAULIC TRAPDOOR

The hydraulic trapdoor is located at the bottom of the bin. The opening allows emptying into railers, hoppers, or even big bags. The conical shape of the bin facilitates emptying.

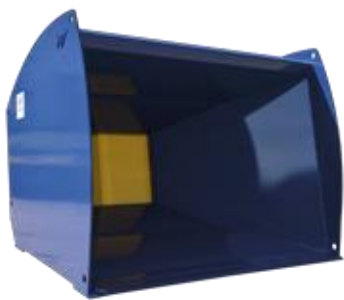


#### BIG-BAG HOOKS

Four hooks are attached to the container for hanging big bags. These make it easier to empty the bags. The hooks are removable.



The machine in action on [Youtube.com/WarzeeSA](https://www.youtube.com/WarzeeSA)



Model	Volume (L)	Overall width (cm)	Weight with fasteners (kg)
BT750	750	1400	700
BT1000	1000	1800	800
BT1500	1500	1800	1000
BT2000	2000	x	1200

